



# The Crow Waltz Rectangular Shawl



*Designed by Juju Vail for Loop, London*

The Crow Waltz Shawl, and its rectangular variation, were inspired by the colours of Old Maiden Aunt yarns, hand-painted in West Kilbride, Scotland by Lilith. We were very excited to get them into the [Loop](#) shop! The colours are unusually subtle, moody and mysterious.

I “unvented” this simple weave-style slip stitch to highlight the way OMA colours blend together. Only one yarn is used at a time ~ the trick is in varying the needle size in each direction.

Lilith has named many of her new colourways after songs, in a hark back to the mix tapes of her youth. Riffing on her theme, I named this shawl after a little ditty by my favourite band, The Be Good Tanyas.

This is a rectangular variation of the Crow Waltz shawl. It would be so much easier to call it the Crow Waltz Scarf, but, if I’m honest, it’s another shawl shape (my favourite), cosying over the shoulders to cross at the neck. To make it a scarf, work a narrower width, in a longer length or work the same width and buy a second skein of colour A to make it longer.

## Abbreviations

K ~ knit	Sl wyif ~ Slip	St(s) ~ stitch(es)	P2tog ~ purl 2
Bo ~ bind off	stitch as if to purl,	Yo ~ yarn over	together
K2tog ~ knit 2	holding yarn in	Yo2 ~ yarn over	P ~ purl
together	the front	twice	Rw ~ row

## Yarn

Old Maiden Aunt~ Alpaca Silk sport/dk ~ 80% superfine Alpaca, 20% silk, 100grams/256 metres (280 yards), 1 Skein each of Kelpie (Colour A) and Afraid of the Woods (Colour B)

If you are making substitutions, this is a sportweight yarn with a lot of drape and a pretty Alpaca halo. You could substitute a sock weight yarn but remember, your shawl maybe smaller when finished.

The two colours are each softly variegated, with some areas of each skein blending together, and some contrasting. For a more striking combination, choose a skein of yarn for colour B with a strongly contrasting variegation. This could be the perfect pattern to use the yarn you bought that looked great in the skein but too blotchy knit-up. Choose a second colour that is a plain or semi-solid to complement it and provide some relief in the borders. See the post on Loop Knit Lounge for some suggestions.

## Size

Approx width 27cm by 125cm in length (10 by 49")

## Needles

Circulars: small ~ 3.25mm (US 3), medium ~ 3.75mm (US 5) and large ~ 5mm (US 8). When knitting the Odd Slip Stitch with different needles, either use an [interchangeable needle set](#) with a 3.25mm (US 3) tip on one end and a 5mm (US 8) tip on the other or use two separate circular needles in these sizes. If you are using two separate circulars, you may wish to cap the unused ends with [point protectors](#).

If you are using a different yarn, it may not make sense to match gauge exactly. The aim is to create a "weave" fabric that is not too tight or dense. The picture at top right gives you an idea of the texture of the fabric.

Also needed: A darning needle and scissors.

*Note: For every slipped stitch in colour A there are 4 worked rows. I say worked, because for every 4 worked rows, there are actually only 3 knit, due to the slipped stitches.*



## Gauge

In Odd Slip Stitch, with the small and large needles:  
10 x 10cm (4 x 4inches) = 17sts x 40rws.

When counting Odd Slip Stitch rows, each slipped stitch of colour A, is worked every 4 rows. Therefore, 10 colour A slipped stitches = 40 rows of pattern.

## Odd Slip Stitch

Worked over an odd number of stitches with the smallest and largest sized needles (3.25mm/US 2 and 5mm/US 8) and two colours of yarn. The rows are highlighted by yarn colour.

- Row 1: With stitches on small needle, knitting onto the large needle, in colour A, \*k1, sl1 wyif\* repeat until 1st remains, k1.
- Row 2: Working from large needle, onto small needle, purl every stitch.
- Row 3: Working from small needle, onto large needle, in colour B, \*sl1 wyif, k1\* repeat until 1st remains, sl1 wyif.
- Row 4: Working from large needle, onto small needle, purl every stitch.

These four rows form the Odd Slip Stitch.

## Picot Bind Off

Cast on a stitch by inserting the right needle between the first two stitches on the left needle, wrap the yarn around the right needle, pull the newly made stitch to the front and place on the left needle. Cast on one more stitch in the same way. Bind off 4 stitches. Transfer the remaining stitch on the right needle to the left needle. Repeat these steps until all the stitches

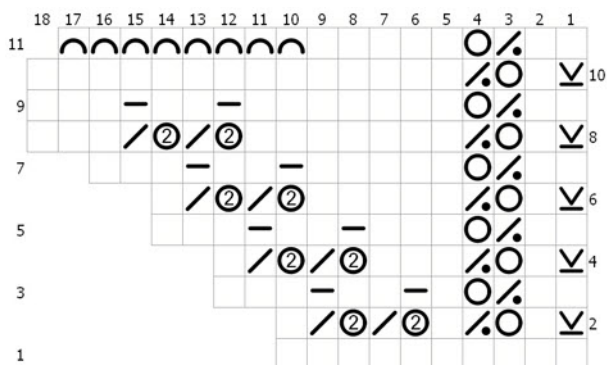
## Crow Waltz Lace Edge

Worked on the middle sized needles (3.75mm /US 5). Cast on 10 stitches. You will be making double yarn-overs and then working them as a knit one, purl one, on subsequent rows.

- Row 1: knit 10sts.
- Row 2: Sl wyif, k1, yo, p2tog, k1, yo twice, k2tog, yo twice, k2tog, k1 (12sts)
- Row 3: K3, p1, k2, p1, k1, yo, p2tog, k2 (12sts)
- Row 4: Sl wyif, k1, yo, p2tog, k3, yo twice, k2tog, yo twice, k2tog, k1 (14sts)
- Row 5: K3, p1, k2, p1, k3, yo, p2tog, k2 (14sts)
- Row 6: Sl wyif, k1, yo, p2tog, k5, yo twice, k2tog, yo twice, k2tog, k1 (16sts)
- Row 7: K3, p1, k2, p1, k5, yo, p2tog, k2 (16sts)
- Row 8: Sl wyif, k1, yo, p2tog, k7, yo twice, k2tog, yo twice, k2tog, k1 (18sts)
- Row 9: K3, p1, k2, p1, k7, yo, p2tog, k2 (18sts)
- Row 10: Sl wyif, k1, yo, p2tog, k14 (18sts)
- Row 11: Cast off 8, k5, yo, p2tog, k2 (10sts)

This completes one repeat of the lace edge. Repeat rows 2-11 for lace edging.

### Crow Waltz Lace Edging Chart



### Chart Key

K		Bo	
P		Sl wyif	
K2tog		Yo	
P2tog		Yo2	

## Pattern

The shawl is begun by knitting the Lace Edges (a and b). The stitches from one of the lace edgings are picked up and the shawl border is knit (c). When the border is complete, the Odd Slip Stitch is knit until it reaches the desired length(d). The border on the other side is knit and then the second lace edge is sewn on (b again). The side edges are picked up and a garter stitch border is knit on (e and f).



## Crow Waltz Lace Edging

Begin lace edge by casting on 10 stitches in colour A with the middle sized needles. Follow the Crow Waltz Lace Edge pattern for a total of 12 repeats. Cast off the remaining 10 stitches.

Make Two edgings.

## Pick Up and Knit Border

Each repeat of the lace edge (10 rows) will have 5 slipped edge stitches to pick up. Pick up 60sts using the middle needles (3.75mm/US5) and colour B: Knit 6 rows (or 3 garter stitch ridges) back and forth on the needles.

Knit one row in colour A.

With colour A: P2, \*P2tog, yo\* repeat 28 times, P2.

Knit one row in colour A.

Knit 6 rows (3 garter stitch ridges) in colour B.

## Main Body

Begin Odd Slip Stitch on row 1 with Colour A and the smallest and largest needles. Knit in Odd Slip Stitch for 97cm (38inches) or until you are just about out of Colour A. My shawl has 304 worked rows. Switch to the middle sized needles.

Knit 6 rows (3 garter stitch ridges) in colour B.

Knit one row in colour A



With colour A: P2, \*P2tog, yo\* repeat 28 times, P2. Knit one row in colour A.  
Knit 6 rows (3 garter stitch ridges) in colour B.  
Holding the “weave” side up, graft the live end stitches together with the slipped edge stitches of the second Crow Waltz Lace Edging.

## Garner Stitch Border Edges

Holding the “weave” side up, begin picking up stitches with the middle sized needles from the right end, after the leaf part of the lace border. Pick up every other row. For my shawl, I picked up 12 stitches of the border before the Odd Slip Stitch and then 136 stitches along the edge of the Odd Slip Stitch, ending with another 12 stitches before the leaf lace edge. Thus, for a shawl with borders and 304 worked rows, I picked up a total of 160sts. You may want to alter this slightly to fit with your gauge and shawl length.

Knit 4 rows of garter stitch and then cast off loosely.

## Finishing

Wet block shawl, by washing in a gentle shampoo and then rinsing with hair conditioner. Roll in a towel to absorb excess water. Lay flat to dry, stretching the garter borders to match the body of the shawl. You may use blocking wires to pin shawl open but I preferred to leave mine with a little texture by



not stretching with wires or pins. Weave in and trim the ends.

Thanks you to [Loopknitting.com](http://Loopknitting.com) for supplying the yarn and Lydia for modelling the shawl.

*Wear and  
Enjoy!*



Copyright agreement: This pattern is the property of the designer. It is copyrighted, and is for personal and non-profit use only. This means that you can knit it for yourself, for a gift or for charity. You may not sell a garment made from this pattern. You may not reproduce this pdf pattern on, or distribute it from, a website. Merchants may not download or print this pattern for sale, distribution, or class use (without prior permission). This pattern may not be translated, reproduced or circulated in another language without prior agreement. Downloading or printing the pattern constitutes agreement within these terms. Thank you, and enjoy your Crow Waltz! Juju Vail, for Loop London, April 2010